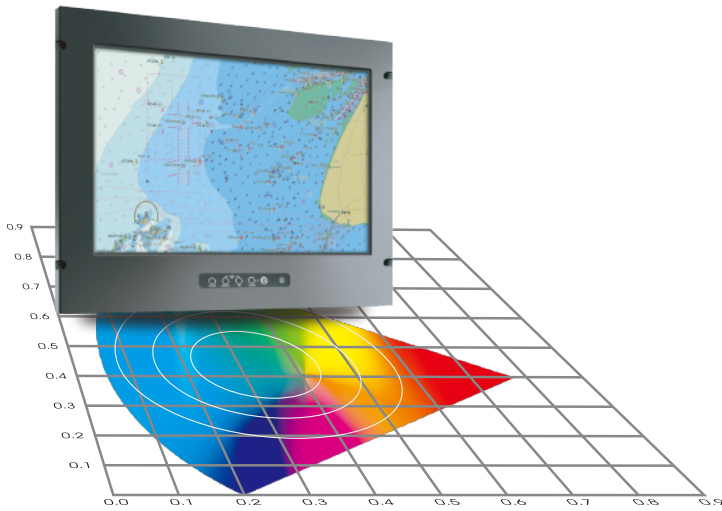


Marine Panel PC (OSD front), 15", 1024 x 768, support, Intel® Core i3 / i5 / i7 and Intel® Atom Baytrial



Features

- Housing with powder coating, IP65 front, IP54 rear
- Color calibration to meet the ECDIS display standard (IEC 61174) is available by request. Support mode Date / Dusk / Night.
- 9~36VDC wide voltage input (Isolated DC-DC voltage regulator built-in) or Option of AC Version (90-260V , 50/60 Hz, auto-sensing)
- Conformal Coating
- Anti-Shock and Vibration enhanced
- Option with stand / VR knob / ECDIS Function

Boards	Model	CB0J07	CB0J08
Systems	System	Intel® Atom Baytrial	Intel® Core i3 / i5 / i7 Processors
	System / Graphic Chipset	Intel® Gen7 Intel Graphics DX 11*, OGL3.2	Intel® HD Graphics (By CPU); Shared Memory
	System Memory	Dual Channel DDR3 1333 MHz SDRAM, Max up to 8GB	2 x DDR3 1333/1600MHz SO-DIMM Slot (up to 16GB)
	HDD	2 x SATA	2 x SATA
	I/O port	1 x VGA, 1 x HDMI	1 x VGA, 1 x HDMI
		2 x USB 2.0, 2 x USB 3.0	2 x USB 2.0, 4 x USB 3.0
		3 x COM (RS232/422/485)	1 x COM (RS232)
Expansion	1 x Mini PCI-e	1 x Mini PCI-e	
Panel	Cell Type / Glass Surface	TFT LCD / Black Anti-Glare, low reflection coating	
	Aspect Ratio / Size	4 : 3 / 15" viewable diagonal area	
	Active Area / Pixel Pitch	304.13(H) x 228.10(V) mm / 0.297(H) x 0.297(V) mm	
	Native Resolution / Colors	1024(H) x 768(V) / 16.2 M	
	Brightness / Contrast	250 cd/m ² (typ) / 700 : 1	
	Response Time	≤ 35 ms	
	Viewing Angle (typical)	H. 140° (- 70° ~ + 70°) , V. 120°(- 60° ~ + 60°)	
	Light Source	LED backlight, Long life, 35,000 hrs (typ)	
Power	Power Input	65 Watt, <1 Watt	
	Power Consumption	9-19V DC-In (4-pin ATX PWR Con) / ATX PWR (24+4 pin)	
Operating Condition	Temperature / Humidity	0°C ~ 50°C (32°F ~ 122°F) , 10% ~ 90% (no condensation)	
Dimensions	Physical	Please refer to Drawing	
	Carton	W x H x D = TBD	

Options	Touch	Video	Enhanced Panel	Others
	Resistive touch	SV + AV	Panel with LED backlight	Digital Signage(Stand alone)
	Capacitive touch	SV + AV + AV_Looping	High brightness panel	Networking Digital Signage
	SAW touch	SV + AV	Wide Temperature	Motion Sensor
	Infrared touch		Sunlight Readable	Light Sensor
	Protected glass			Auto-Dimming

Options	ECDIS	Stand	VR Knob
	